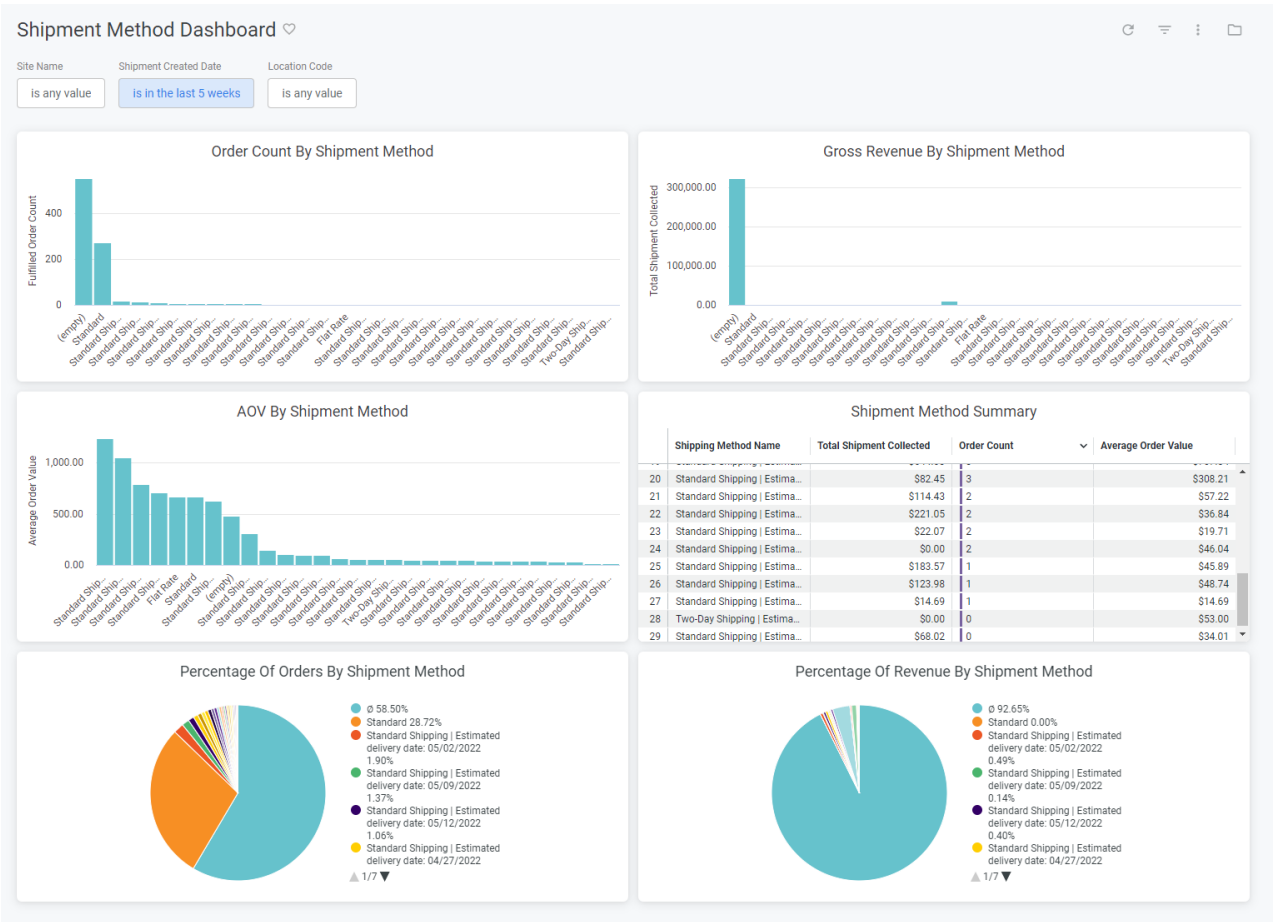


# Shipment Method Dashboard

The Shipment Method dashboard breaks down metrics by specific shipment methods, displaying performance for a particular shipment method or comparing performance across multiple methods. This can be viewed under the shipment topic at **Kibo Standard Reports** > **Shipment** > **Shipment Method Dashboard** in the navigation menu.



Name	Description
Gross Revenue / Shipment Total	The sum of all shipment totals where the order payment status is collected.
Order Count	Count of all shipments where the shipment status is fulfilled.
Average Order Value	The order total divided by the valid order count.

The tiles that make up this dashboard are:

Name	Description
Order Count By Shipment Method	The order count for each shipment method.
Gross Revenue By Shipment Method	The shipment total for each shipment method.
AOV By Shipment Method	The average order value for each shipment method.
Shipment Method Summary	The shipment count, order count, and average order value for each shipment method.
Percentage Of Orders By Shipment Method	The order count for each shipment method as a percentage of the order count for all shipment methods.
Percentage Of Revenue By Shipment Method	The shipment total for each shipment method as a percentage of the shipment total for all shipment methods.