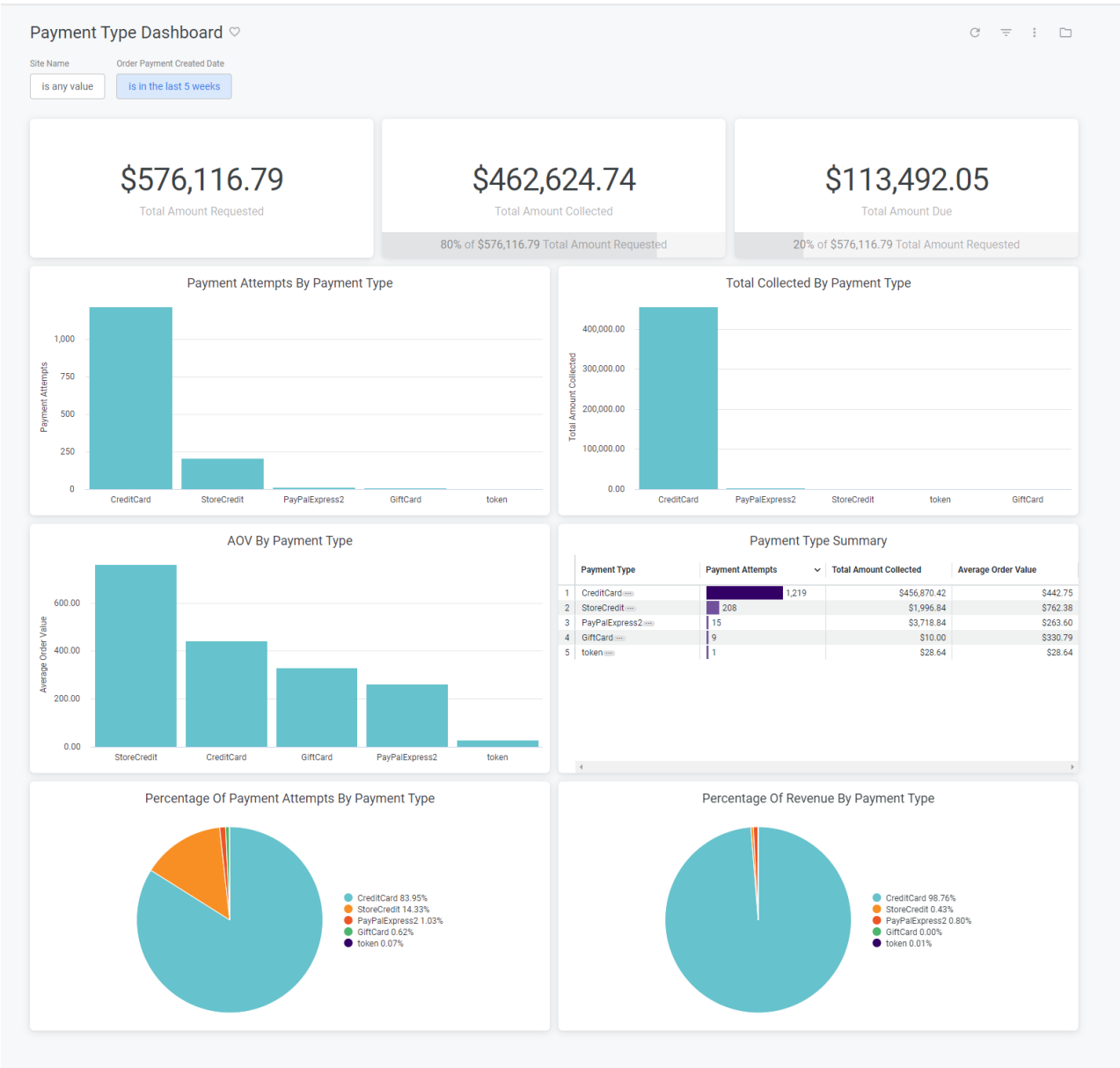


Payment Type Dashboard

The Payment Type dashboard breaks down metrics by specific payment types, displaying performance for a particular payment type or comparing performance across multiple types. This can be viewed under the payments topic at **Kibo Standard Reports > Payments > Payment Type Dashboard** in the navigation menu.



The supported filters that can be applied to this dashboard are:

Name	Description	Default
Site Name	Restrict results to one or more of your sites.	All

Name	Description	Default
Order Payment Created Date	Limit results to only payments attempted within this time range.	Past five weeks

The measures that are calculated by this dashboard are:

Name	Description
Total Amount Requested	Sum of amount requested for all order payments.
Total Amount Collected	Sum of amount collected for all order payments.
Total Amount Due	The total amount requested minus the total amount collected.
Average Order Value	The order total divided by the valid order count.

The tiles that make up this dashboard are:

Name	Description
Total Amount Requested	The total amount requested for all order payments.
Total Amount Collected	The total amount collected for all order payments. Progress bar shows the total amount collected as a percentage of the total amount requested.
Total Amount Due	The total amount due for all order payments. Progress bar shows the total amount due as a percentage of the total amount requested.
Payment Attempts By Payment Type	Count of payment attempts for each payment type.
Total Collected By Payment Type	The total amount collected for each payment type.
AOV By Payment Type	The average order value for each payment type.
Payment Type Summary	The count of payment attempts, total amount collected, and average order value for each payment type.

Name	Description
Percentage Of Payment Attempts By Payment Type	The count of payments attempts for each payment type as a percentage of the total count of payment attempts for all payment types.
Percentage Of Revenue By Payment Type	The total amount collected for each payment type as a percentage of the total amount collected for all payment types.