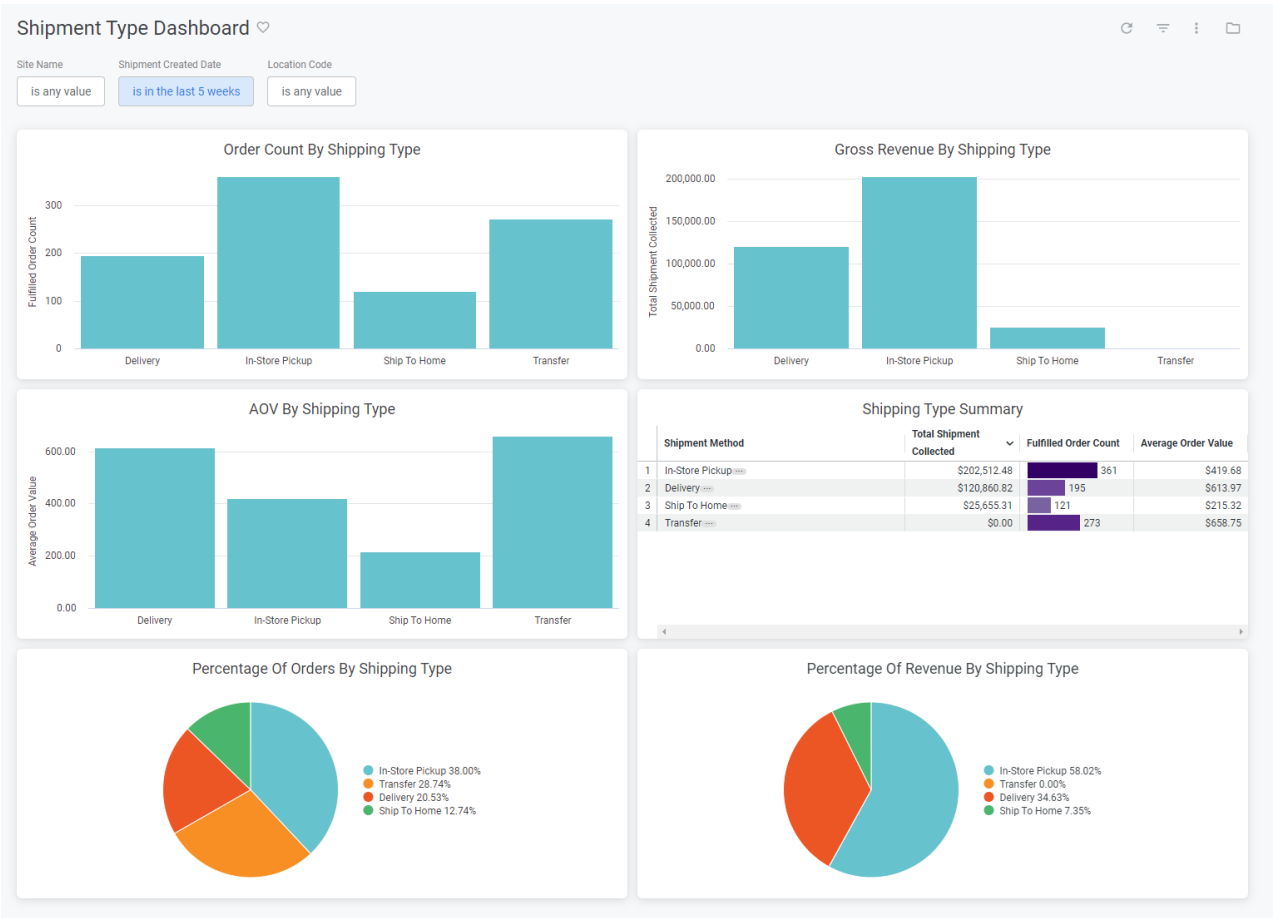


Shipment Type Dashboard

The Shipment Type dashboard breaks down metrics by specific shipment types, displaying performance for a particular shipment type or comparing performance across multiple types. This can be viewed under the shipment topic at **Kibo Standard Reports > Shipment > Shipment Type Dashboard** in the navigation menu.



The supported filters that can be applied to this dashboard are:

Name	Description	Default
Site Name	Restrict results to one or more of your sites.	All
Shipment Created Date	Limit results to only shipments created within this time range.	Past five weeks
Location Code	The location codes where the shipments were fulfilled.	All

The measures that are calculated by this dashboard are:

Name	Description
Gross Revenue / Shipment Total	The sum of all shipment totals where the order payment status is collected.
Order Count	Count of all shipments where the shipment status is fulfilled.
Average Order Value	The order total divided by the valid order count.

The tiles that make up this dashboard are:

Name	Description
Order Count By Shipment Type	The order count for each shipment type. Only shipment types with at least one associated order are shown.
Gross Revenue By Shipment Type	The shipment total for each shipment type. Only shipment types with a shipment total greater than zero are shown.
AOV By Shipment Type	The average order value for each shipment type. Only shipment types with at least one associated order are shown.
Shipment Type Summary	The shipment count, order count, and average order value for each shipment type. Only shipment types with at least one associated order are shown.
Percentage Of Orders By Shipment Type	The order count for each shipment type as a percentage of the order count for all shipment types.
Percentage Of Revenue By Shipment Type	The shipment total for each shipment type as a percentage of the shipment total for all shipment types.